

## Hermetically-Sealed Bending Beam



### FEATURES

- Capacities: 10, 20, 50, 100, 200 and 250kg
- Hermetically-sealed
- Nickel-plated alloy or stainless steel construction
- High side load tolerance
- Easy installation
- OIML C3 approval from 50kg to 250kg

### DESCRIPTION

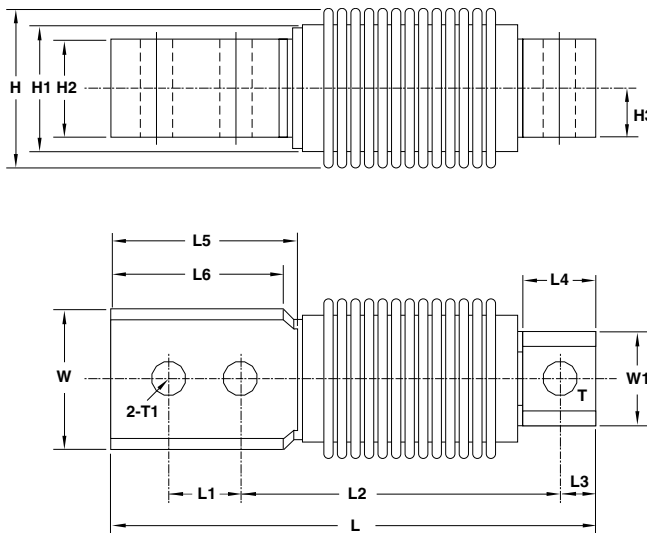
HBB is a single-ended bending beam load cell designed for multiple cell applications, such as low profile platform scales or small tank scales when used with proper mounting accessories. It is insensitive to side load and capable of reversed loading.

HBB is constructed of nickel-plated alloy or stainless steel and hermetically-sealed to IP68 providing excellent protection against corrosive and wash-down environments.

### APPLICATIONS

- Platform scales (multiple load cells)
- Silo/hopper/tank weighing
- Packaging machines
- Dosing/filling
- Belt scales/conveyor scales

### OUTLINE DIMENSIONS



#### Wiring diagram

- + Excitation Red
- Excitation Black
- + Signal Green
- Signal White

CAPACITY (kg)		L	L1	L2	L3	L4	L5	L6	H	H1	H2	H3	W	W1	T	T1
10, 20, 50, 100, 200, 250	mm	120	18	82	10	19	41	38	41.6	28.2	20	10	31.5	26.6	Ø8.2	Ø8.2
	(inch)	4.72	0.71	3.23	0.39	0.75	1.61	1.50	1.64	1.11	0.79	0.39	1.24	1.05	Ø0.32	Ø0.32

**SPECIFICATIONS**

PARAMETER	VALUE		UNIT
	Non-Approved	C3	
NTEP/OIML Accuracy class	1000	3000*	
Maximum no. of intervals (n)	1000	3000*	
$Y = E_{max}/V_{min}$	5000	10000	Maximum available
Standard capacities ( $E_{max}$ )	10, 20, 50, 100, 200, 250		kg
Rated output-R.O.	2.0		mV/V
Rated output tolerance	0.25		±% of rated output
Zero balance	1		±% of rated output
Non linearity	0.030	0.025	±% of rated output
Hysteresis	0.030	0.025	±% of rated output
Non-repeatability	0.020		±% of rated output
Creep error (20 minutes)	0.030	0.020	±% of rated output
Zero return (20 minutes)	0.030	0.020	±% of rated output
Temperature effect on min. dead load output	0.0026	0.0014	±% of rated output/°C
Temperature effect on sensitivity	0.0015	0.0010	±% of applied load/°C
Compensated temperature range	-10 to +40		°C
Operating temperature range	-20 to +60		°C
Safe overload	150		% of R.C.
Ultimate overload	300		% of R.C.
Excitation, recommended	10		Vdc or Vac rms
Excitation, maximum	15		Vdc or Vac rms
Input impedance	385±5		Ohms
Output impedance	350±3		Ohms
Insulation resistance	>5000		Mega-Ohms
Cable length	3		m
Construction	Alloy or Stainless steel		
Environmental protection	IP68		

\* Capacities: 50-250kg

All specifications listed subject to change without notice.

**VISHAY TRANSDUCERS (VT) SALES OFFICES**

**VT Americas**  
City of Industry, CA  
PH: +1-626-858-8899  
FAX: +1-626-332-3418  
vt.us@vishaymg.com

**VT Netherlands**  
Breda  
PH: +31-76-548-0700  
FAX: +31-76-541-2854  
vt.nl@vishaymg.com

**VMG UK**  
Basingstoke  
PH: +44-125-646-2131  
FAX: +44-125-647-1441  
vt.uk@vishaymg.com

**VMG Israel**  
Netanya  
PH: +972-9-863-8888  
FAX: +972-9-863-8800  
vt.il@vishaymg.com

**VMG Germany**  
Heilbronn  
PH: +49-7131-3901-260  
FAX: +49-7131-3901-2666  
vt.de@vishaymg.com

**VT China**  
Tianjin  
PH: +86-22-2835-3503  
FAX: +86-22-2835-7261  
vt.prc@vishaymg.com

**VMG France**  
Chartres  
PH: +33-2-37-33-31-20  
FAX: +33-2-37-33-31-29  
vt.fr@vishaymg.com

**VT Taiwan\***  
Taipei  
PH: +886-2-2696-0168  
FAX: +886-2-2696-4965  
vt.roc@vishaymg.com  
\*Asia except China